



2400 Nueces University of Texas at Austin

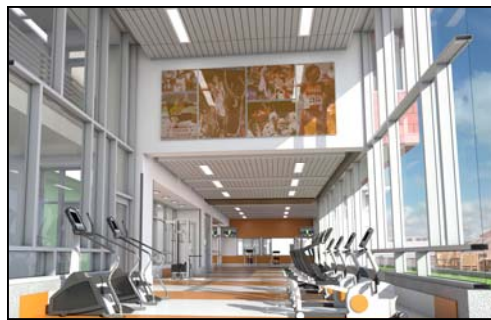


Overview

Sustainability and amenities are the focus for the high-rise, mixed-use 2400 Nueces that EdR, is developing for the University of Texas System Board of Regents. As the ground tenant, EdR is developing and will own and manage the new high-rise aimed at the collegiate community on the campus of The University of Texas-Austin.

The project is being financed through EdR using the On-Campus Equity Plan: The ONE PlanSM.

Along with apartments for graduate students, staff and upper classmen, the building will feature approximately 11,400 square feet of ground-level retail, a rooftop patio, fitness center and 500-plus-space structured parking.



Construction began in the summer of 2011 with completion set for the summer of 2013. A Leadership in Energy and Environmental Design (LEED) Silver designation is the goal for the project.

Sustainability Features

- Optimizing building performance and energy use in all phases of construction and occupancy
- Maximizing daylighting and natural ventilation
- Using high amount of local and regional products to speak to the language of central Texas while reducing the impact of hazardous ozone compounds by lowering transit distance on building materials

Project Details

Beds Units	622 304
Stories	16
Gross Size	367,315 square feet housing 11,456 square feet retail
Developer	EdR
Manager	EdR
Owner	EdR
Sustainability	LEED Silver-designed
Completion	Fall 2013
Cost	Total: \$63.9 million Construction: \$61.7 million
Room Styles	Studio and 1-, 2-, 3- and 4-bedroom units
Amenities	Structured parking, swimming pool, fitness center, rooftop patio, granite countertops and ceramic tile.
Architect	PageSoutherlandPage Architects
Contractor	Hensel Phelps Construction Co.
Financing	EdR
Reference	Amy Wanamaker Campus Director of Real Estate The University of Texas at Austin 1616 Guadalupe Street, Suite 2580 Austin, TX 78701-1245 (512) 471-7582 awanamaker@austin.utexas.edu